



ENVIROTEK FORESTRY CONSULTING, LLC TIMBER SALE # 119

Kyle Blasch et al Property; Hollandale; Wisconsin

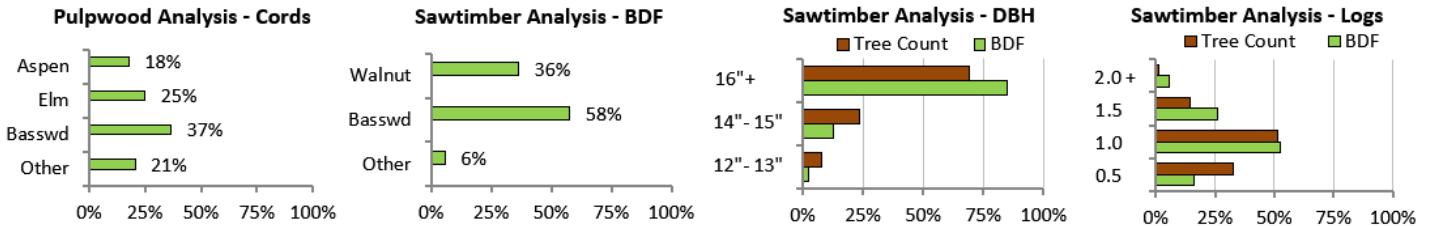
32 acres; T04N; R04E; Section 11; Waldwick Twp.; Iowa County; Wisconsin

Harvest Volume Estimates

-Buyers are encouraged to conduct their own inventory-

Board Feet, Scribner Log Rule

Species	5" - 11"			12" - 13" DBH			14" - 15" DBH			16" + DBH			Total Volumes		
	Cords	BDF	Trees	Avg.	BDF	Trees	Avg.	BDF	Trees	Avg.	Cords	BDF	Trees		
Walnut	10	180	6	30	660	12	55	14,180	92	154	10	15,020	110		
Basswood	41	580	17	34	3,860	64	60	19,400	157	124	41	23,840	238		
Elm	28	160	6	27	600	11	55	1,340	13	103	28	2,100	30		
Black Oak	1	0	0	0	40	1	40	60	1	60	1	100	2		
White Oak	1	0	0	0	0	0	0	80	1	80	1	80	1		
Bur Oak	1	0	0	0	40	1	40	0	0	0	1	40	1		
Misc. Harwoods	10	0	0	0	80	1	80	0	0	0	10	80	1		
Aspen	20	0	0	0	0	0	0	0	0	0	20	0	0		
Designated Timber	112	920	29	<i>32 BDF</i>	5,280	90	<i>59 BDF</i>	35,060	264	<i>133 BDF</i>	112	41,260	383		



- Cordwood estimated by cruise - BAF 10 prism. Utilization of topwood would add 41 cords (1 cord/1,000 BDF).
- Converting 12"-13" sawtimber to bolts would add 2 cords while reducing total BDF by 920 ft.

Conditions of Sale:

- Contract length is until April 1, 2028.
- A 10 % down payment is required with the balance due before logging begins.
- The Seller will guarantee Purchaser use of the Log Landing(s) "🌲", as shown on the attached aerial photo, for the sole purpose of harvesting operations authorized by this Contract.
- No logging operations will be allowed during the gun deer hunting season.
- No felling, bucking or skidding shall be allowed in the creek, as shown on the attached aerial photo.
- Existing and constructed trails used by the Purchaser must be graded and cleared of logging slash upon completion of logging operations authorized by this Contract.
- Harvest trees are marked on the bole and stump with BLUE paint.
- Walnut trees are Geo-located and numbered in white paint on the bole and stump.

Cutting Specifications: Utilization of Designated Timber is optional. All Designated Timber must be felled or girdled.

Silvicultural Prescription: Group Selection

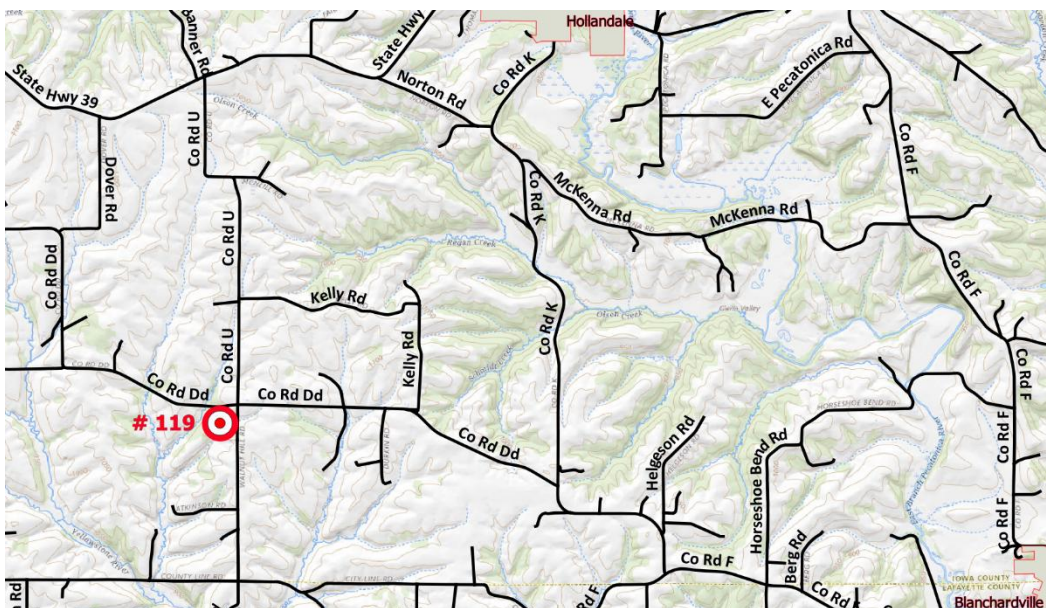
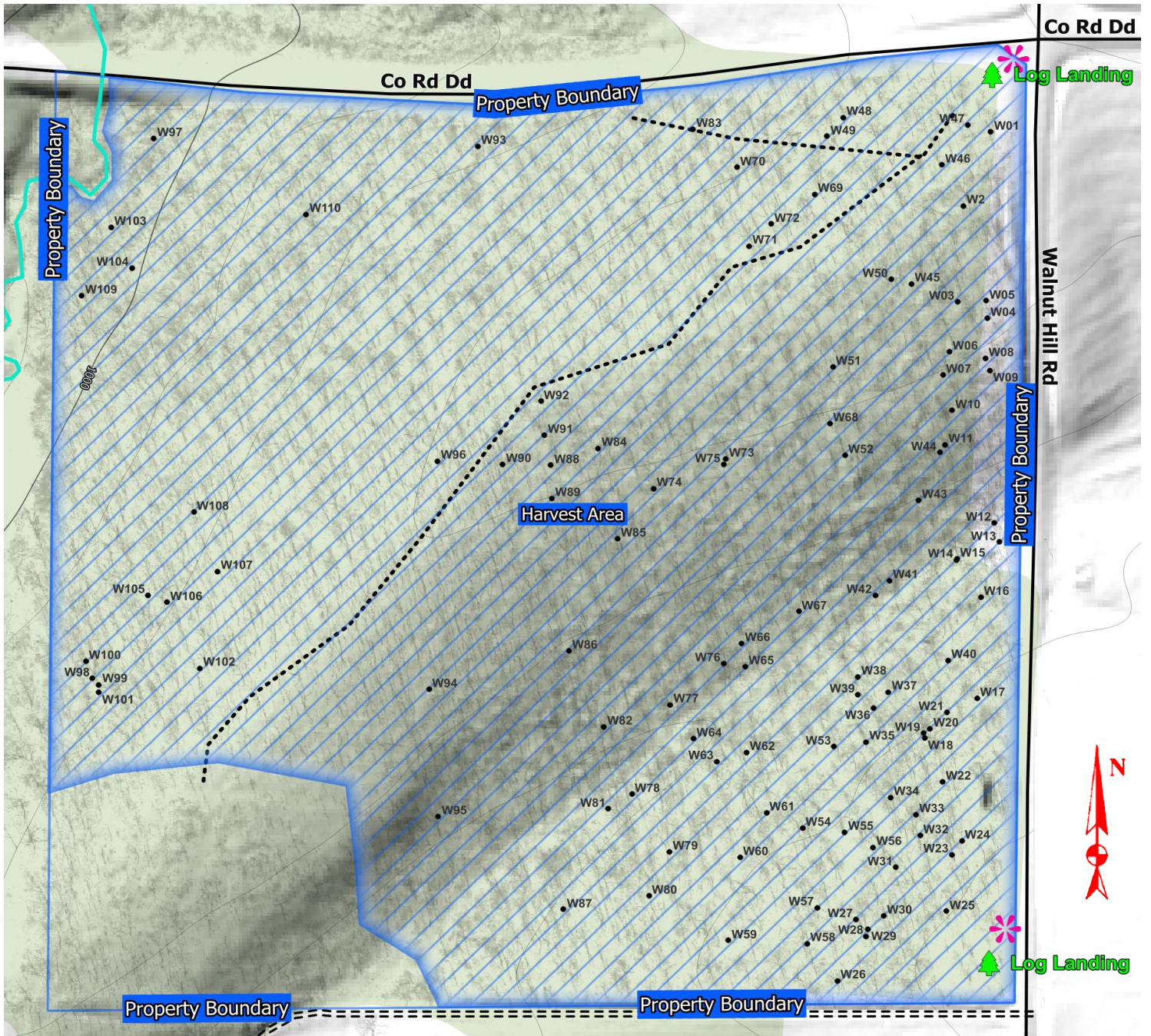
- **Within the timber sale boundary, designated on the ground with blue flagging, and on the associated map, a blue line:**
 - Harvest all merchantable live aspen, elm, boxelder, birch, ash. Purchaser is not excluded from utilizing less than 5 inch dib.
 - Harvest all trees marked on the bole and stump in BLUE paint.

Merchantable volume defined as Designated Timber containing at least (1) 100 inch stick with a minimum top diameter of 5 inches dib and greater.

General Information:

- ✓ All Designated Timber is FSC 100% (MFL # 25-026-2014). Certification chain of custody ends at stump, landing, or roadside.
- ✓ No Oak Wilt restriction.
- ✓ No crop off restriction.
- ✓ This sale is easily logged mechanically. Fairly level terrain with 2 roadside log landings.
- ✓ Walnut quality varies from poor to high quality. When selected, small diameter walnut were selected due to poor quality.

FOR LOCATION AND AERIAL PHOTO OF TIMBER SALE #119 TURN THIS PAGE OVER



Cutting Specifications:
Utilization of Designated Timber is optional. All Designated Timber must be felled or girdled.

- **Within the timber sale boundary, designated on the ground with blue flagging, and on the associated map, a blue line:**
 1. Harvest all merchantable live aspen, elm, boxelder, birch, ash. Purchaser is not excluded from utilizing less than 5" dib.
 2. Harvest all trees marked on the bole and stump in BLUE paint.